



CHARACTERISTICS

- The tape comprises an airtight foil-fleece combination
- The self-adhesive affixing strip enables the foil tape to be simply applied in such a way that it is completely concealed
- Can be plastered and painted over
- Stretchable

APPLICATIONS

- Suitable for renovation and new building work.
- **Paraband W Interior** for the airtight sealing of the internal window connecting joint.
- The affixing strip applies a high level of adhesive force to all kinds of window frame.

TECHNICAL CHARACTERISTICS

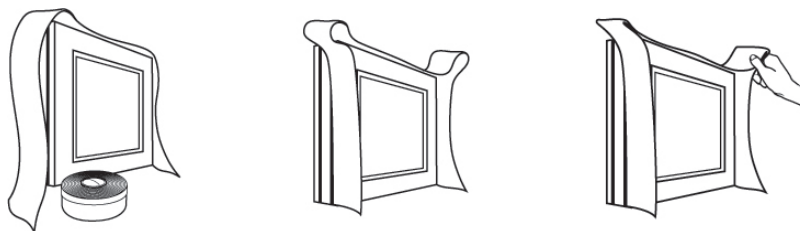
Colour	Pink
Fibre/foil composition:	PES-PE-PES
Weight: DIN 53 854:	138 g/m ²
Thickness: DIN 53 855:	0,48 mm
Tensile strength: DIN 53 857	Lengthwise: 304 N/5cm Crosswise: 50 N/5cm
Elongation at break: DIN 53 857	Lengthwise: 23% Crosswise: 134%
Permissible overall deformation	5%, based on the non-adhered tape width (it is possible that a loop/movement reserve is to be provided during installation).
WDD – current density: DIN 53 122)	0,96 g/m ² x d
Air tightness: EN 1026	An ≤ 0,1
sd value	ca. 39 m (DIN 4108 T.3 diffusion-impeding)
Waterproofness: DIN EN 20811	> 3000 mm
Fire behavior: DIN 4102	B2 (P-NDS04-369, MPA Bau Hannover)
Can be plastered over	Yes
Operative temperature range:	-40° C - +80° C
Processing temperature:	+5° C - +40° C
Shelf life in unopened packing in a dry and cool place between +5°C and +25°C.	12 months
Outdoor exposure/ UV:	3 months

PACKING AND MEASUREMENTS

Measurement	Packing	Pallet
100 mm	4 rolls of 30 m/box	48 boxes/pallet
150 mm	2 rolls of 30 m/box	48 boxes/pallet
200 mm	2 rolls of 30 m/box	48 boxes/pallet
250 mm	1 rolls of 30 m/box	48 boxes/pallet
300 mm	1 rolls of 30 m/box	48 boxes/pallet

METHOD OF USE

This technical data sheet replaces all previous editions. The data on this sheet have been compiled according to the last laboratory report. Technical characteristics can be changed or adapted. We are not responsible for any incomplete information. Before use, one needs to ensure that the product is suitable for his application. Therefore, tests are necessary. Our general conditions apply.



Preparation

The adhesive surfaces must be dry and free from oil, grease and dust.

Application

- Unroll **Parabond W Interior** and cut it so that there is sufficient excess length.
- Pull off the masking paper from the transfer adhesive and adhere the tape to the window frame so that it is concealed.
- Form a loop at each of the corners. Press the adhesive strips of the loops so that it is possible to ensure an airtight connection. Adhere to the 4 sides of the window frame.
- Mount the window frame.
- Fill in the function levels with **Parafoam Flexible**. We recommend the use of **Parabond Construction** for adherence to the masonry substrate.
- Do not lay the tape from the window frame to the masonry in a steep slope as the applied plaster will otherwise be too thin and tear.

Cleaning

The skin can be cleaned with soap and water. Residue adhesive can be removed with **Parasilico Cleaner**.

Disposal

Residue tape can be disposed of in the household waste. The local regulations are to be adhered to.

SAFETY

Not a hazardous material in the meaning of the Hazardous Material Regulations and the corresponding EC directives. We recommend however that you take the same care and use the same hygiene as with chemical materials.

TECHNICAL APPROVALS

This technical data sheet replaces all previous editions. The data on this sheet have been compiled according to the last laboratory report. Technical characteristics can be changed or adapted. We are not responsible for any incomplete information. Before use, one needs to ensure that the product is suitable for his application. Therefore, tests are necessary. Our general conditions apply.